



eHealth

# CIAP Newsletter

## Building resilience to Australian flood disasters

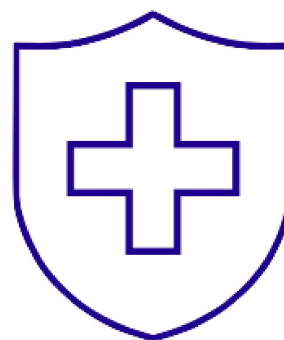
Unprecedented floods in the Northern Rivers, NSW, and in south-east Queensland have caused deaths and devastation and disrupted health and other services and facilities.

Deaths from drowning, injuries, poisonings and infections are typically the immediate health impacts of floods.

However, these direct impacts are only the tip of the health iceberg.

Learn more about the impacts and solutions here in the [Medical Journal of Australia](#).

Access provided by CIAP.



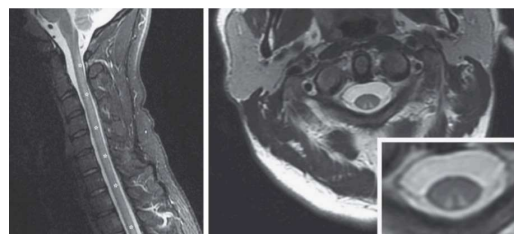
## What is the diagnosis?

A 32-year-old man presented with a 6-week history of tingling in his arms and legs and a 2-week history of inability to walk.

A positive Romberg test, sensory ataxia, impaired proprioception and vibratory sensation, and preserved nociception were noted.

[Find out the answer here](#) in the NEJM.

Access provided by CIAP.



## Calling all nurses and midwives

Collaboration with NSW Health clinicians and support teams has always been a top priority of CIAP.

In 2023 our 5-year managed services and resources contract is up for renewal.

We are seeking feedback from all CIAP users across NSW Health to help guide CIAP in ensuring the best resources and value for NSW Health staff are maintained.

If you could please take the time to complete our [CIAP 2022 User Survey](#) to share with us your recommendations and feedback for the future.

The average time to complete the survey is 4 minutes.



## Supporting physicians to practice rurally

The distribution of health professionals between metropolitan, regional, rural and remote areas is a key issue for access to health care for rural populations.

Clear short term policy solutions do not exist and long term solutions rely on fundamental changes to the way doctors are recruited, trained and supported.

Supporting physicians to practise rurally is complex and should be part of a multifaceted strategy to provide more health care in the bush.

Learn more about this editorial to get more physicians in the bush here in the [Medical Journal of Australia](#).

Access provided by CIAP.



## Dream Team: Sport and exercise medicine meets the emergency department

Emergency clinicians frequently encounter patients presenting with sports injuries and also have a role in promoting health and wellbeing in the general population.

This trainee focus editorial provides a brief overview regarding how physical activity affects health and goes on to discuss core issues that are relevant to clinicians working in ED.

Learn more about physical activity in ED in [Emergency Medicine Australasia](#).

Access provided by CIAP.



## Participation outcomes for persons with a disability paired with an assistance dog

This scoping study shows how assistance dog partnerships can positively impact on participation, a key factor in promoting quality of life.

For occupational therapists, current findings present a more practical understanding of potential participation outcomes and can allow for better identification of people who may benefit from a partnership with an assistance dog.

Learn more about the findings here in the [Australian Occupational Therapy Journal](#).

Access provided by CIAP.



## Is burnout simply a stress reaction?

The biological changes associated with both stress and burnout suggest considerable overlap.

But does the use of burnout as a distinct and relatable syndrome suggests it is worthy of independent designation?

Find out about the full study here in the [Australian & New Zealand Journal of Psychiatry](#).

Access provided by CIAP.



## Upcoming CIAP Events

### Live Online Training

CIAP Overview  
15, 20, 21 September  
14:30 - 15:30

[Register Here](#)

### Workshops

Nursing & Midwifery Workshop  
27 October  
  
Emergency & Critical Care Workshop  
9 November

[Register Here](#)

1300 28 55 33 or click on [Support](#) from the top menu on CIAP.



[LinkedIn](#) | [Twitter](#)

Copyright © 2022 eHealth NSW  
All rights reserved.

This email was sent by CIAP Team, eHealth NSW - CC 652950, Tower B, Level 13, Zenith Centre, 821 Pacific Highway, Chatswood, NEW SOUTH WALES 2067, Australia to [vien.vu@health.nsw.gov.au](mailto:vien.vu@health.nsw.gov.au)

[Unsubscribe](#)

