



CIAP Newsletter

Exploring the link between adolescent internet use and depression: new insights from a longitudinal study

A recent study investigated the relationship between adolescent internet use and depression symptoms.

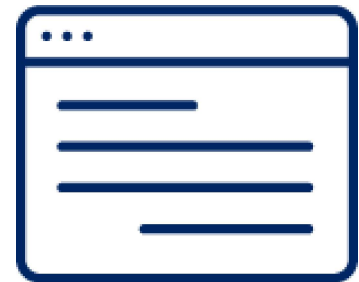
Using longitudinal data from 1547 participants, the study found that girls who used the internet more had an increased risk of developing depression symptoms.

Specifically, internet use at ages 13 and 15 was linked to higher depression symptoms at ages 15 and 17 for girls, while there was no significant association for boys.

This suggests that internet use could be a significant risk factor for depressive symptoms in adolescent girls.

Learn more about this study in [Psychological Medicine](#).

Access provided by CIAP.



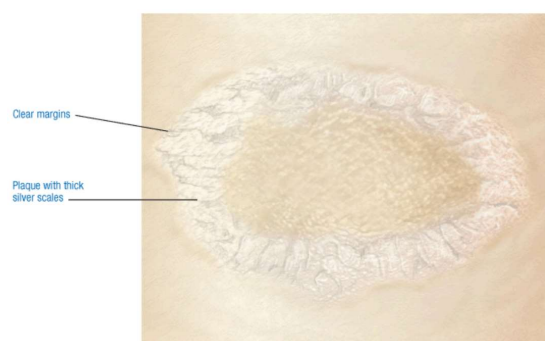
What is the diagnosis?

This condition causes lesions of erythematous papules and plaques covered with silvery scales.

The severity and distribution of lesions vary widely

This condition involves recurring exacerbations and remissions that are usually controllable with therapy.

It also includes flares that commonly relate to specific environmental factors (such as trauma, sunlight) and



systemic factors (such as infection, drugs, smoking, alcohol)

What's the diagnosis?

[Find out the answer here](#) in Lippincott Advisor.

Access provided by CIAP.

UpToDate Pathways & Lab Interpretation

UpToDate®

Did you know CIAP has access to UpToDate Advanced?

This includes access to UpToDate Pathways and Lab Interpretation

UpToDate Pathways includes interactive guides to help make appropriate decisions related to specific clinical questions.

UpToDate Lab Interpretation provides monographs to quickly help interpret abnormal lab results and to choose the next steps.

You can explore more of [UpToDate Advanced here](#)

Access provided by CIAP.

Spotlight: Lippincott Advisor

Lippincott Advisor provides the WHY to support competency of nurses and midwives to integrate knowledge, skills, abilities, and judgments at the point of care.

It is created by nurses for nurses and localised by Australian peak nursing bodies (Australian College of Nursing and the Australian College of Nurse Practitioners).

Discover [Lippincott Advisor here](#).

Access provided by CIAP.



Clear link: severe distance vision problems in seniors raise dementia risk by 72%, highlighting the vital role of vision health in overall well-being

The objective of this research was to gauge the connection between visual impairment (VI) and dementia in older US adults using precise visual and cognitive tests.



This secondary analysis of the 2021 National Health and Aging Trends Study, encompassing 3,817 participants aged 71 and older, incorporated tablet-based visual tests and unveiled that all forms of objectively measured VI were linked to a higher prevalence of dementia.

This underscores the significance of prioritising vision health as a preventive measure for optimising cognitive function.

Learn more about the study in [JAMA Ophthalmology](#).

Access provided by CIAP.

Spotlight: Lippincott Procedures

Lippincott Procedures provides the HOW to support competency of nurses and midwives to integrate knowledge, skills, abilities, and judgments at the point of care.

This resource offers over 445 Australian procedures and competency assessments mapped to the NSQHS, 2000 US clinical procedures, videos, and images. It also provides skills checklists to document observation of competency demonstration, and supports education, training, and development from novice to expert.

Discover [Lippincott Procedures](#) here.

Access provided by CIAP



Upcoming CIAP Events

Live Online Training

Request Group Training

[Register Here](#)

Workshops

Emergency & Critical Care
8 November

Advanced Searching Workshop
23 November

Allied Health Workshop
5 December

[Register Here](#)

Need help with CIAP?

Contact the [CIAP helpdesk](#) 24 hours, 7 days a week.
1300 28 55 33 or click on [Support](#) from the top menu
on CIAP.

ehealth.nsw.gov.au

[LinkedIn](#) | [Twitter](#)



This email was sent by CIAP Team, eHealth NSW - CC 652950, Tower B, Level 13, Zenith Centre, 821 Pacific Highway, Chatswood, NEW SOUTH WALES 2067, Australia to vien.vu@health.nsw.gov.au

[Unsubscribe](#)

